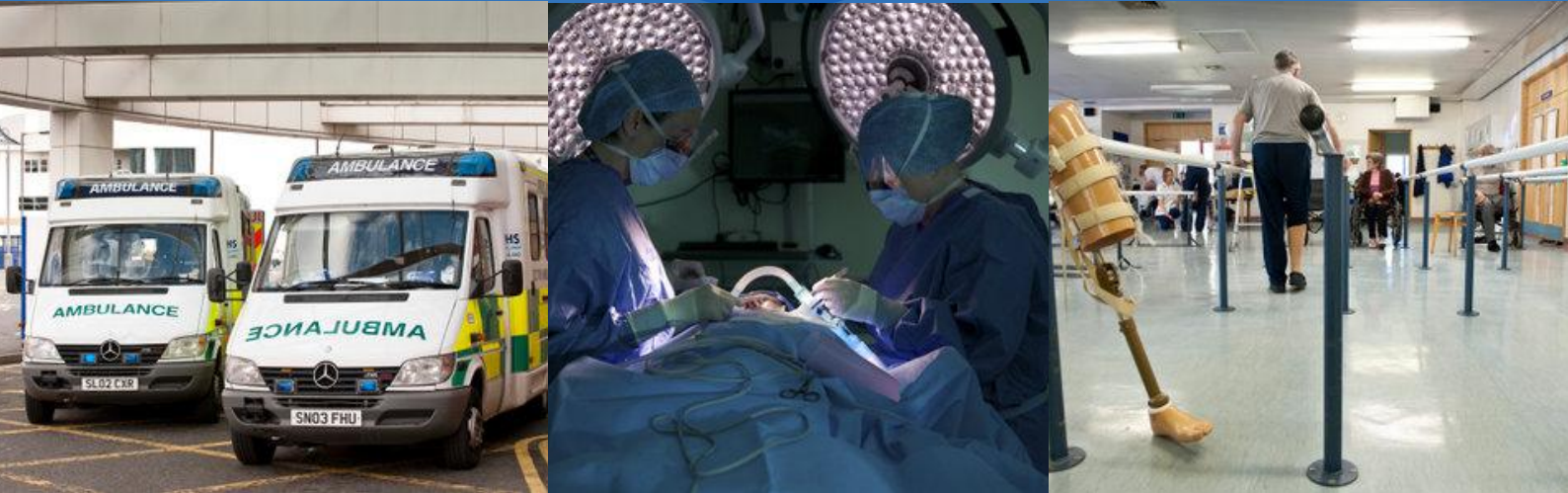




Network News

The Newsletter of the South East Region Trauma Network



Welcome to Issue 7

Welcome to issue seven of the South East Trauma Network (SETN) newsletter.

The first six months of 2020 have been particularly busy for the South East Trauma Network as we have been required to adapt the way we operate in order to progress the work of the Network in the midst of the Covid-19 pandemic.

Recruitment to key roles has continued throughout this period and we are delighted to welcome a number of new faces to our teams across the region. Our teams on each site have also been busy implementing key improvements to the way we treat major trauma patients. This has included continual review of protocols to ensure sites work collaboratively and effectively throughout the patient journey and publication of our Network Trauma Management Guidelines booklet. Our colleagues in Forth Valley Royal Hospital have also been particularly busy, working towards implementing a new on-site specialist rehab unit which will directly benefit stroke; head injury; amputee and major trauma patients and is due to go live this August.

We hope that you'll find this issue an informative insight into our work over the last few months, as we look towards going live as a Network in March 2021!

The South East Trauma Network Team

In This Issue

Network News	2
Training and Education	4
Spotlight on the MTC	5
Clinical Governance	6
Members Profile	7

STN Annual Review

The Scottish Trauma Network's (STN) Annual review for 2019/2020 was published in July 2020.

The report showcases some of the key achievements we have made together as a National Network as well as highlighting some exciting work undertaken by our colleagues in other regions and pre-hospital care.

Network News

Recruitment Update

All sites have been busy continuing to recruit to key roles within the Network. A short summary of some of the key positions that have been recently filled can be found below:

Major Trauma Co-ordinators

Major Trauma Co-ordinators are now in post at all three Trauma Units (Borders General Hospital; Victoria Hospital Kirkcaldy; Forth Valley Royal Hospital). The Network looks forward to benefiting from their wide-ranging expertise to help shape and develop our rehab pathways over the coming months. From March 2021, the co-ordinators will also be responsible for supporting patients throughout the entirety of their patient journey. This will include helping coordinate repatriation of patients back to the Trauma Units and/or the community, and also support the development of patient rehab plans. A Rehabilitation Co-ordinator for the Major Trauma Centre is in the process of being recruited to – it is expected they will be in post in early Autumn.



MTC Speciality Doctors

Seven Major Trauma Speciality Doctors are due to join the team at the Royal Infirmary of Edinburgh in August. The team will undertake initial work in the Emergency Department and Intensive Care Unit prior to the Major Trauma Centre going live next year. Once the Network goes live all Doctors will also gain opportunities to develop experience of trauma in a specialty of their choice.



Major Trauma Centre Emergency Department Consultants

The final two of our six Major Trauma Emergency Department Consultants have now been appointed. Once in post, the Major Trauma Centre will be able to provide 24/7 cover which will help ensure that all Major Trauma patients are received by a Consultant upon arrival.



MTC Medicine of the Elderly Consultants

The MTC recently appointed three Medicine of the Elderly Consultants. The Medicine of the Elderly service will provide an early and responsive seven day MoE specialist assessment and management for the frail elderly trauma patients, both medically and from a rehabilitation perspective.



MTC Advanced Nurse Practitioners

A further two Advanced Nurse Practitioners (ANP) are due to begin in the service shortly and will be joining our current team of ANP's who are currently completing their MSc in Advanced Practice. Together, they will work closely with the multidisciplinary team and specialist consultant to take responsibility for the treatment and management plan for patients across the major trauma pathway.



Paediatric Physiotherapist

Physiotherapist, Judith Montgomery is the first to join the Paediatric MTC Rehab team. Other AHP positions for the MTC, RHCYP are due to be recruited to in the near future.



Forth Valley Royal Hospital (FVRH) Immediate and Secondary Transfer Protocol Agreed

Forth Valley Royal Hospital lies between the regional catchment for the West and South East of Scotland Trauma Networks.

A protocol which now confirms that Forth Valley patients requiring an immediate or secondary transfer will be transferred to the South East Major Trauma Centre in the first instance, has now been agreed by the South East Trauma Network Regional Clinical Lead and Chief Executive of NHS Forth Valley Royal Hospital.



Network News

Forth Valley Royal Hospital to Open Specialist Rehab Unit



Forth Valley Royal Hospital (FVRH) is due to pilot a ten bedded specialist rehab unit on-site, this will include provision for Neuro; Stroke; amputees and Major Trauma patients. It is expected that co-locating patients requiring specialist rehab in one place will result in improved outcomes and length of stay.

In advance of opening the new unit, the site has also recently appointed to the majority of their rehabilitation posts for the Trauma Unit. This includes a recently appointed AHP Consultant for Specialist Rehab who will provide input into Major Trauma.

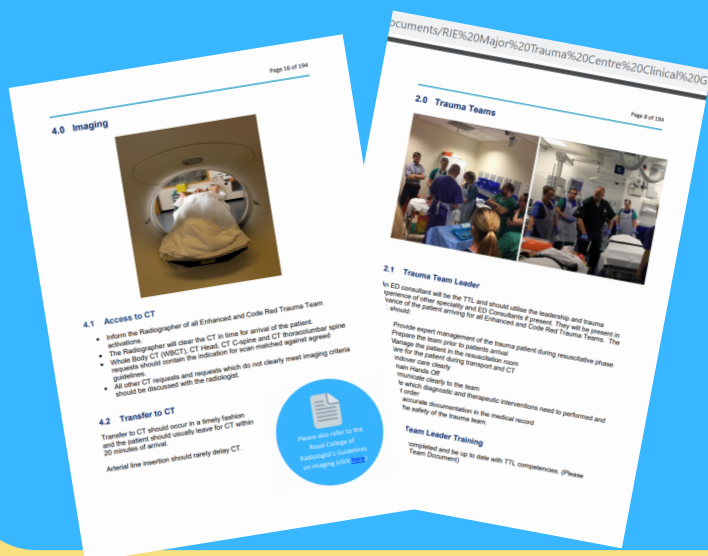
Rehabilitation Plan in Development

A National Rehabilitation plan is currently in development by Rehab Leads within the Scottish Trauma Network. The adult plan will be developed in two parts, the first part will be agreed Nationally and will include the agreed minimum data set required for STAG (Scottish Trauma Audit Group). The second part will be agreed by each network to reflect the varying requirements of each region.

The West of Scotland and South East of Scotland whose Networks are both due to go live in spring next year intend to work closely on development of the second part of the document. This will help ensure consistency and standardisation across both Networks and may particularly benefit those patients located within the boundaries of Forth Valley Health Board as this hospital lies between the two Networks.



Trauma Management Guidelines Published



The South East Trauma Networks Trauma Management Guidelines booklet has now been published and is available to all staff within the Network through the [NHS Lothian website](#).

The comprehensive document covers over thirty nine topics for adults and paediatrics. The booklet also provides guidance on the management of a variety of injuries and links to relevant literature and documentation where appropriate.

The MTC Clinical Director and Project Team are currently working with developers to explore the potential for creating a Trauma Management Guidelines mobile app – watch this space!

Training and Education

Staff Training and Education Continues..

Despite the Covid-19 pandemic, sites within the Network have been working to continue staff training and education opportunities.

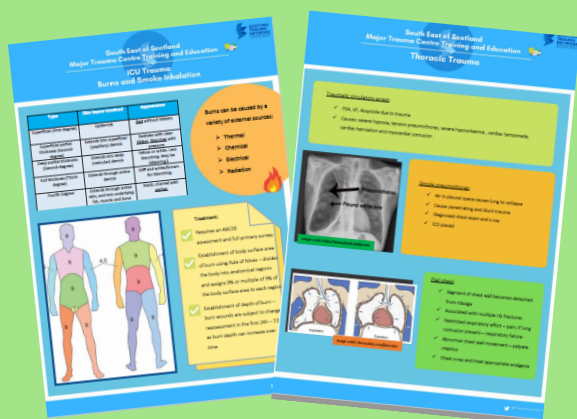
- ✓ Mortality and Morbidity reviews are continuing to take place on all sites and across the region. Microsoft Teams is often being used to allow staff to meet and share learning in a safe, physically distanced manner.
- ✓ Trauma Team simulations have been taking place weekly at the Borders General Hospital with particular focus on reviewing trauma team activation and how patients are initially received within the Emergency Department.
- ✓ Major Trauma Nurse Educators at the Major Trauma Centre have been working to identify alternative ways to provide nursing staff with training in Level 1 and Level 2 Major Trauma Ward competencies.
- ✓ Monthly Paediatric Trauma Simulations are due to recommence in August. It is also expected that the SAS Advanced Practitioners will resume their training in Paediatric Critical Care from later this Summer. This was postponed due to covid-19.
- ✓ South East SAS Advanced Practitioners have now been signed off on all Major Trauma competencies and are focusing on obtaining further practical experience.
- ✓ A Thoracic Regional Analgesia training day took place in February at the Major Trauma Centre, Royal Infirmary of Edinburgh. The training which will help support improvements to care for patients requiring chest wall management received excellent feedback and engagement from staff.



Trauma Action Cards

Major Trauma Nurse Educator Noelle Norberto has been developing a series of Major Trauma Action Cards. The action cards provide a great five minute refresher on the basics of a number of trauma related topics.

The action cards will be made available to all staff in the region via the NHS Lothian internet page shortly.



TCAR/PCAR - Remote Learning Opportunities

Over eighty members of staff from across the South East were due to attend the Trauma Care After Resuscitation (TCAR) and Paediatric Care After Resuscitation (PCAR) courses in March. These courses were unfortunately cancelled due to the Covid-19 pandemic.

The Network is pleased to announce that it will be able to offer staff who were due to attend this course the opportunity to complete this course remotely via video link in October.



Spotlight on the MTC

Several changes are being implemented at the Royal Infirmary of Edinburgh and Royal Hospital for Sick Children in advance of the Major Trauma Centre's going live next year.

Consultant of the Week Rota

The Major Trauma Centre Clinical Director has been working with Leads from all relevant specialties to agree input into the Major Trauma Consultant of the week rota. Final clarification is expected by the end of Aug 2020.

There are currently consultants contributing from other relevant specialties. This has included appointment of two Major Trauma Consultant positions (including Thoracic surgeon; Vascular and Plastics)

A Consultant of the Week rota is work in progress. Work is currently ongoing to ensure that all specialties contribute to this rota.

The Major Trauma Consultant will be responsible for:

- Being a part of the 'Major Trauma Service', that is committed, highly motivated group of multi-specialty consultants who share the common goal of providing the best possible care to seriously injured patients.
- The coordination of the care of major trauma patients admitted to the Royal Infirmary of Edinburgh (RIE), who pending the opening of a major trauma ward are found in a number of clinical areas under a number of specialties.
- Minimising duration of stay and maximise patient experience of major trauma patients at RIE.
- Being the single point of contact for Trauma Units in our region to access RIE Major Trauma service.

Psychological Support for Staff & Patients

A range of roles have been recently appointed to provide additional psychological support for patients – this includes the appointment of a Consultant Psychiatrist; Neuropsychologist; Mental Health Trauma Nurse and Senior Specialist Nurse will have lead professional responsibility for the implementation of psychological interventions in the Major Trauma Centre, RIE

The Network has also been working to safeguard the wellbeing of its workforce. Key links have been developed with services such as the Rivers Centre who will work to provide additional Mental Health and Psychological support for staff working in the Major Trauma Centre and also undertake staff training in Psychological First Aid.



Major Trauma Centre Ward, RIE

The formal design and development phase for the Major Trauma Ward is now well underway with a final floor plan for the Ward now agreed by Infection Control, Clinical Staff and Consort.

It is anticipated that the enabling works will begin in Autumn 2020 ensure the Ward is ready to receive our patients to the Ward in March 2021.



Paediatric MTC Equipment

The Royal Hospital for Sick Children has begun purchasing some new pieces of equipment in advance of becoming a Major Trauma Centre next year. Access to this new equipment is already helping implement improvements to patient care.

- Trauma mattresses have been trialed and tested in imaging and are now being used in the Paediatric Emergency Department. They are making a difference in the Child and young person's journey from ED via scanning / OT to Critical Care.
- Patient transfer scales have been introduced to Paediatric ED and Critical Care and are improving the accuracy of the weights of CYP which improves drug calculations and better assessment of nutritional requirements.



Upcoming: Models of Care Workshop for MTC and DCN

Two workshops are due to be scheduled in the coming months to engage staff who will be working within the Major Trauma Centre and Department for Clinical Neurosciences.

The focus of the workshops will be to begin engagement with staff and to familiarise staff with the new roles and major trauma pathways. Further details on the workshops are set to be confirmed shortly.

Clinical Governance

Key Learning from the Regional Governance Group

The South East Trauma Network Mortality and Morbidity meetings take place quarterly to review patient cases and identify key aspects of learning to share among staff.

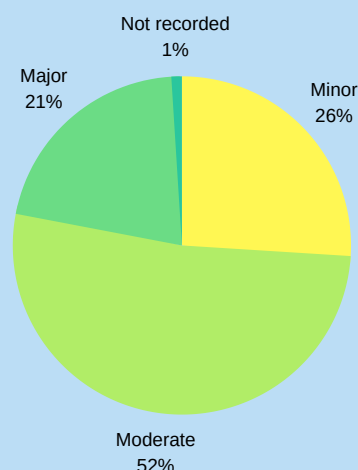
Learning point summaries are distributed following each meeting. Some key takeaways from the last two meetings in March and June are summarised below:

- Paediatric trauma, like silver trauma can often be difficult to initially assess the extent of injuries. It's important to be wary of potential underlying injuries, even when the patient initially appears relatively well.
- The Paediatric Trauma Triage Tool will begin to be used by pre-hospital care once the Network goes live next year. This should help support early identification of the most severe trauma cases, and ensure patients get access to definitive care as early as possible.
- In cases where a chest drain is used, it's important to ensure that chest drain is fully drained as this can sometimes result in further complications. A follow-up should be provided to check for issues such as empyema.
- Studies show that patients with over three rib fractures can have dramatic improvements to morbidity and length of stay if they are cohorted into the MTC. FVRH Trauma Unit Clinical Lead is working on developing a local rib fracture pathway.



At A Glance: Trauma In South East January - June 2020

Breakdown of Severity of Injury - January - June 2020



Most common Injury Mechanisms for Trauma in South East



Moving Vehicle (Transport)



Falls



Contact with animal/object



Contact with person

The Scottish Trauma Audit Group (STAG) Annual Report - covering the complete 2019 data set will be published in August 2020

Development of new RHSC Referral Pathway In Process

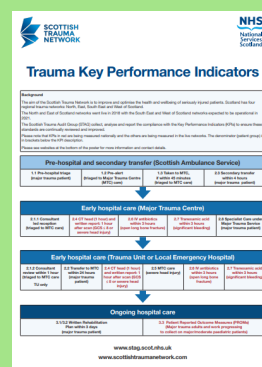
The RHSC is in the process of developing a new Referral pathway for patients who arrive into the Major Trauma Centre from a Trauma Unit. This will include providing Trauma Units with access to an on-site single point of contact, for whom they can get in touch with to speak to a Senior Clinician within the MTC's Emergency Department to get additional advice and support. The document will also outline cases in which it will be appropriate for the patient to arrive into Paediatric Critical Care or the Emergency Department.



Paediatric Major Trauma Tertiary Survey Code

The paediatric trauma tertiary survey has been finalised and is expected to be added on the TRAK system shortly, accessible via a shortcode.

It's expected that having the survey on TRAK will increase completion rates as staff can easily check off when specific injuries have been reviewed.



Remind yourself and colleagues of the STN's Key Performance Indicators by referring to this poster created by the Scottish Trauma Audit Group

[Click here](#) to view and print





Members Profile

Martin Esposito, Clinical Effectiveness Lead, Scottish Ambulance Service



Martin has worked within ambulance services in the UK for over 23 years gaining a wealth of experience in a variety of roles. Since qualifying as a paramedic in 2000 he has worked as an Emergency Care Practitioner as well as spending time as a flight paramedic for London's Air Ambulance. He played an integral role in the establishment of Scotland's trauma desk in 2012 and is the clinical lead for that desk. As part of the development of the Scottish Trauma Network, Martin led the roll out of the Major Trauma Triage Tool. The aim of his current role is to ensure that the SAS is continually developing the pre-hospital clinical care provided to major trauma patients. Whilst this is a national role, Martin is based in the South East and regularly completes operational ambulance shifts in the Edinburgh area. Martin has also spent a number of years in education and is an examiner for the Diploma in Immediate Care. In addition to trauma, Martin has a special interest in pain management and after recently completing an MSc in Pain Management at Cardiff University, has become an honorary tutor on their pain management programme.

Contact:  Martinesposito@nhs.net  @MartinREsposito

Useful Resources

Trauma Nuggets

Little nuggets of trauma related information - regularly posted on the @MTCSouthEast twitter page courtesy of Edinburgh Emergency Medicine.

South East Website

Regular updates on the Network alongside links to relevant guidelines and educational resources are available on the South East Trauma Network Website

STN Website

Keep up to date with the progress of the Scottish Trauma Network and the ongoing work of each of the Regional networks.

MTC M&M Learning Point Summaries

Useful summaries of key learning and discussion points from every monthly Major Trauma M&M. (Available only to Major Trauma Centre staff via the NHS Lothian Intranet)

MTC Quality Improvement Newsletter

Bi-annual summary of key learning points from MTC M&M Meetings alongside information on upcoming training and education opportunities. (Available only to MTC staff via the NHS Lothian Intranet)

Trauma Management Guidelines

South East Trauma Network Trauma Management Guidelines. Guidelines on over 35 trauma related topics - including management of injuries and network protocols

Highlight your work in our next newsletter

We hope you have found this newsletter informative. If you work in major trauma services and would like to highlight your work to colleagues and the public, please contact us in one of the following ways:

Eilidh Markie, Project Support for the South East Trauma Network



Eilidh.Markie@nhslothian.scot.nhs.uk



@TraumaSouthEast



0131 465 5584