

Child Protection Triage in Children Presenting with Major Trauma

**NOT INDEPENDENTLY
MOBILE**

NOT yet crawling, bottom shuffling, pulling to stand, cruising or walking independently.

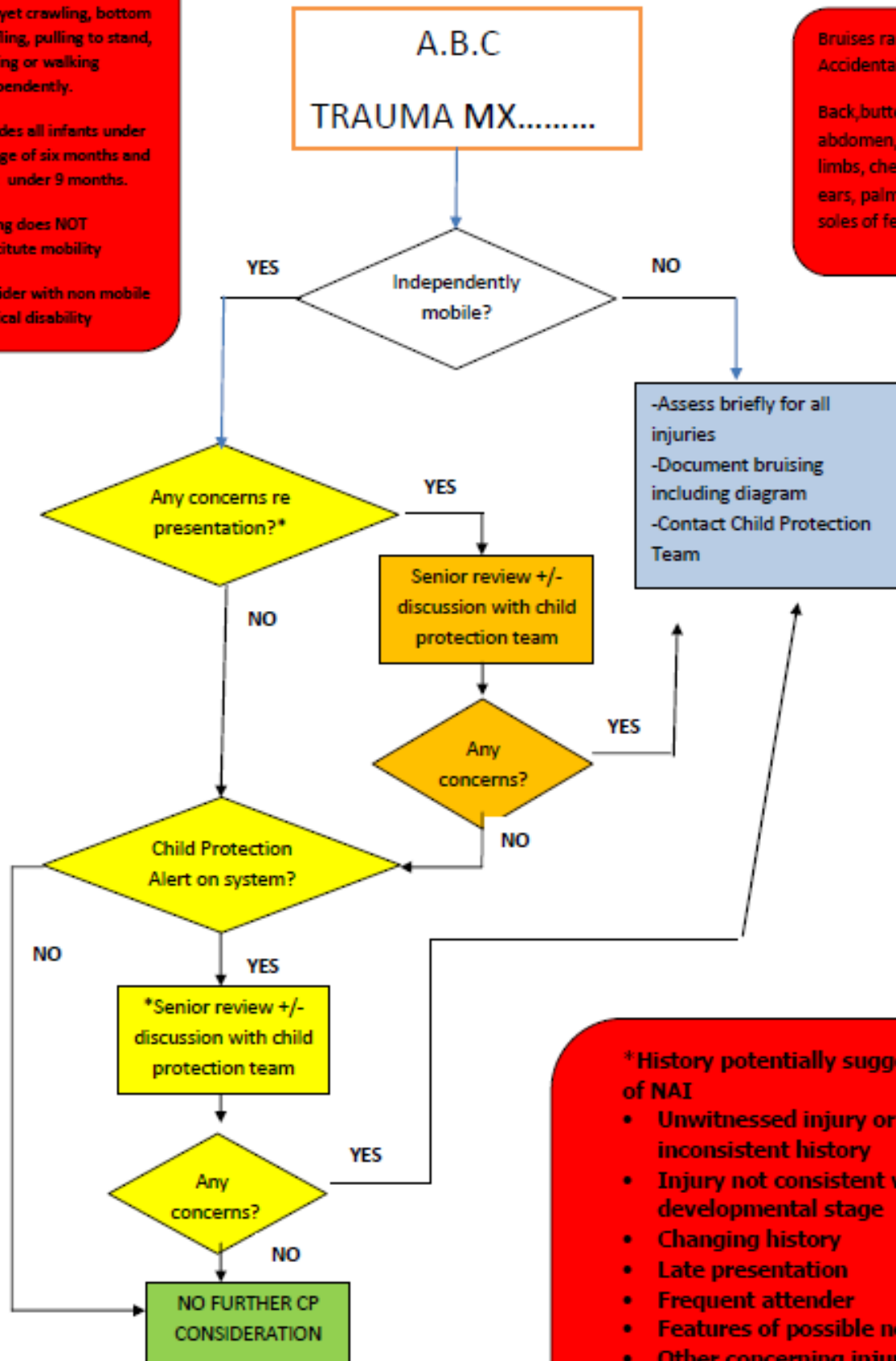
Includes all infants under the age of six months and most under 9 months.

Rolling does NOT constitute mobility

Consider with non mobile physical disability

Bruises rarely seen in Accidental Trauma

Back, buttocks, abdomen, upper limbs, cheeks, eyes, ears, palms of hands, soles of feet



***History potentially suggestive of NAI**

- Unwitnessed injury or inconsistent history
- Injury not consistent with developmental stage
- Changing history
- Late presentation
- Frequent attender
- Features of possible neglect
- Other concerning injuries identified